



범용

한글학교 역사문화 수업자료

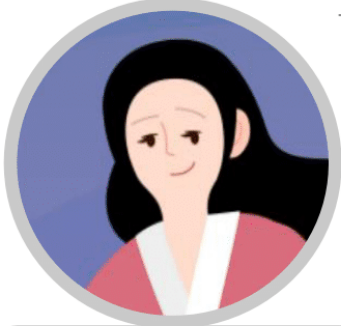
지혜이야기





활동지 1

Write the names of the main characters in the fairy tale and match them with the right description.



가난했지만 마음이 착한
청년으로 공주와
결혼해서 아주 용감한
장군이 되었어요.



'평원왕'이라고 부르기도
하는 임금님으로
고구려를 강한 나라로
만들려고
노력했지만 평강공주에게
는 무서운 아버지였어요.



어릴 때는 아주 심한
울보였지만 아주
지혜롭게 자라 남편을
훌륭한 장군이 될 수
있도록 도와주었어요.



활동지 2



As a child, General Ondal was teased as 'stupid Ondal' for being poor and funny. But with the help of Princess Pyeonggang, he became a brave general. What would you say to young 'stupid Ondal' if you met him? Write down the things you would say to him in the blank below and explain why.

온달아!



활동지 2

Search for wise women characters you want to know about and see how they behaved. After the search, write it down in the blank and share it with friends.



Blank rounded rectangular box for notes.

Large rounded rectangular box with four horizontal lines for writing.



Blank rounded rectangular box for notes.

Large rounded rectangular box with four horizontal lines for writing.



Blank rounded rectangular box for notes.

Large rounded rectangular box with four horizontal lines for writing.



Blank rounded rectangular box for notes.

Large rounded rectangular box with four horizontal lines for writing.